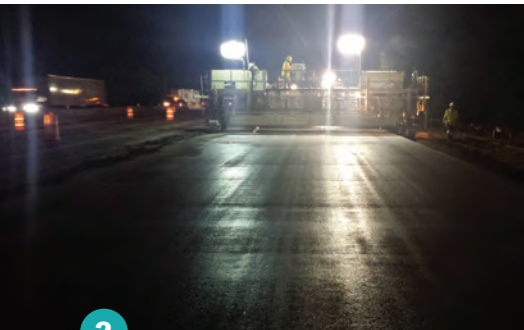


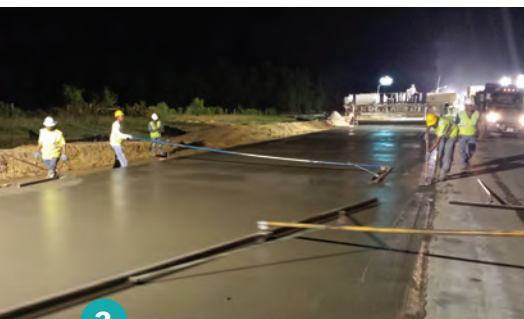
Interstate 75 in Dooly County, Georgia: A Shining Example of Long-Lasting Concrete Pavements



1 Rebuilding the 11.6 mile roadway section under high speed traffic



2 Mainlining the full-width paving section



3 Smoothing the concrete pavement

Interstate 75 in Dooley County, Georgia was originally constructed in 1961 as a four-lane concrete roadway; two additional lanes were added in the 1990s. After 53 years of service with high traffic volume, improvements were needed to replace the original four lanes and widen the outside shoulders.

“This is an exciting project for our industry both from a contractor and supplier perspective. Replacing 50-plus years old concrete highlights the value of concrete and should be a shining example why longer lasting pavements are both economical and feasibly superior,” said **Steve Davis, executive director of Georgia Concrete Paving Association.**

This project, awarded to McCarthy Improvement Company (MCI), was designed to replace an 11.6 mile section of the original four lanes of roadway (10-inch concrete on a 12-inch base) with new lanes (12-inch concrete on 12-inch base), as well as widening the 10-foot inside and outside shoulders. A single batch plant was used for the 200,000 cubic yards of concrete; cement (55,000 tons) was provided by Argos USA. The mainline full-width paving (25 feet) was performed while using an eight-inch narrow track for the southbound lanes, which was only separated from the barrier wall by 12 inches.

The construction was performed under excessive traffic conditions with more than 53,000 vehicles a day. Thirty percent of that was truck traffic. The National Highway System (NHS) estimates that by 2030, traffic on this section of I-75 will increase to more than 80,000 vehicles a day. Therefore, these improvements will enhance the national traffic ratings from “D” level service to a “B” level.

Maureen Bush, project manager for McCarthy Improvement Company, stated, “This project certainly had its challenges dealing with the close proximity of traffic at high rates of speed, but I think it is a testament of our employees’ professionalism and determination. In addition to the traffic, we faced very wet conditions and our crews did an excellent job keeping the project moving forward. This project will certainly serve the area well for another 50 years.”



4 McCarthy Improvement utilizing a single batch plant

By: Steve Davis
Executive Director
Georgia Concrete Paving Association

